

October 2009

Teleconnections

Published by:



Webster-Calhoun
Cooperative Telephone Association

1106 Beek Street, PO Box 475, Gowrie, Iowa 50543 ★ Phone: 515-352-3151 ★ www.wccta.com ★ www.wccta.net

Wireless Needs Wireline

Contrary to public perception, wireless cell phone networks do not stand alone. Calls do not travel from tower to tower to reach an intended recipient. All of the towers you see connect via special access circuits to a landline network somewhere. For example, many of the US Cellular and Verizon towers in our serving area connect to Webster-Calhoun's landline network to send calls to their switching center located in Des Moines. In some cases those calls are sent back into our network to terminate to cellular towers or wireline telephones in your home.

The mobile switching center is the brains of the system that connects a mobile call at a given cell site to one on another cell site, or to another wireless, wireline or data network. It also includes databases to track the status of the wireless carrier's customers, as well as other carriers' customers using the system and keeps track of all billing and usage data.

Many additional functions and features of wireless networks such as Internet access, e-mail and content services including video and music continue to expand and depend on wired networks for transport to wireless carriers and their customers.

Look for more newsletter articles that discuss the vital role of rural networks in completing the call on wireless networks.

Boo Hoo

Something Is Wrong With The Computer



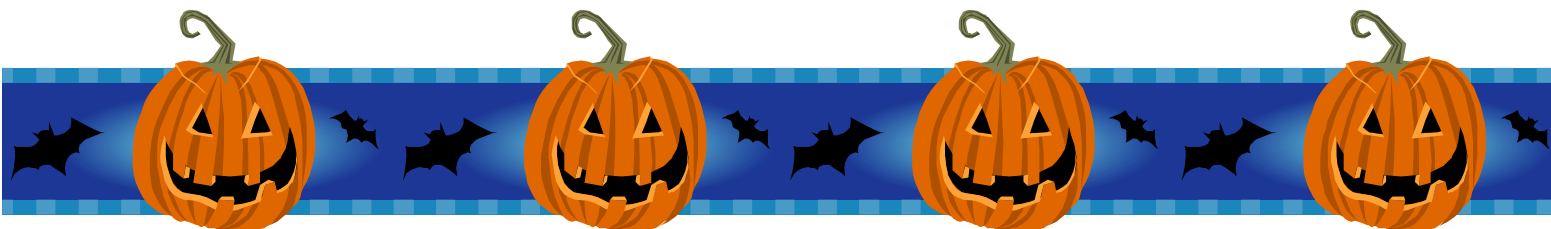
Are ghosts and goblins messing with your computer? Router issues, printer issues, error messages, slowness, viruses or spyware? Maybe you just don't understand the new Vista operating system on your new computer.

Call TotalTech at 1-888-723-4932

Prices vary depending on issue.
Guaranteed... no resolution? No Charge.

Did you know, if you have **SecureIT Plus Computer Protection** you can call the toll free, technical help number any time?
1-877-373-3320.

No software will catch everything that happens on your computer. Don't wait until it is too late. If you "think" there is a problem, technicians can double check your computer and make sure your software is working correctly.



October is National Cooperative Month

*Owned by our Members,
Committed to our Communities*

October is National 4-H Month!



Webster-Calhoun is a supporter of youth programs.

Property Tax Payments

It's that time of year again and property taxes are due. The amount of property tax that Webster-Calhoun pays each year is based on the valuation of physical plant and revenues set by Iowa. The assessment is allocated back to counties based on telephone cable miles in each county.

Approximate totals of WCCTA property taxes paid in September 2009 include:

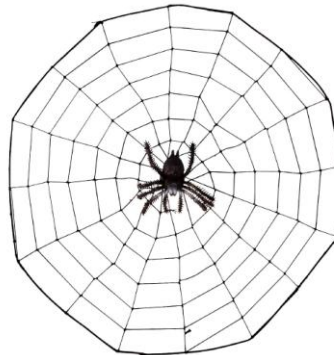
Webster	\$51,750
Calhoun	\$12,947
Greene	\$19,186
Boone	\$10,603
Humboldt	\$7,179
Hamilton	\$1,849
Pocahontas	\$156
Wright	\$328
Total	\$103,998

Construction Update:

In October, representatives from Cross Country will start mounting NID (network interface device) boxes on houses in **Badger**. A box (approximately 16" tall x 12" wide) will be attached to the house where the new cable was plowed (and a gray pipe is sticking out of the ground). If you have questions or concerns about this process or the placing of the box on your house, please call the office as soon as possible.



Central Cable Contractors will continue working in **Clare** town and Clare rural areas. Approximately the first part of November they will move to the **Barnum** town and then Barnum rural areas.



Happy Halloween

Getting
Caught In The Web?

There are a lot of creepy things on the World Wide Web. **Get SecureIt Plus Computer Protection** from Webster-Calhoun to take care of viruses, spyware, Microsoft updates and more!! It even includes parental controls to make sure your kids don't find something creepy on the web. Call 352-3151 for more information.

